



Model: See Affected Units

Serial #: N/A

Apr. 25, 2025

Product Bulletin # TDS-266 Rev 1

Alert



Blower Deflector Inspection

Issue

Canrig has become aware of an incident in which the blower deflector became entangled with a cable, and part of it became detached. The incident is still under investigation to determine the exact cause.

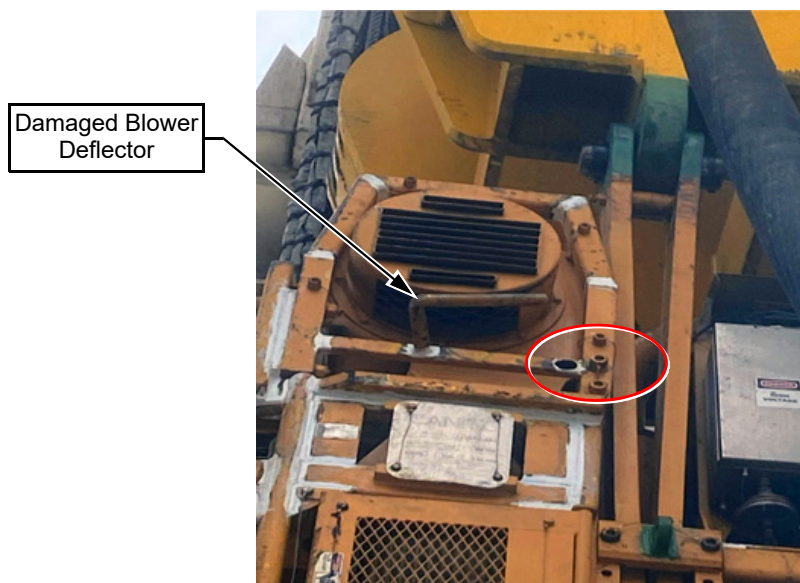


Figure 1: Damaged Top Drive Blower Deflector

Affected Units

Canrig Top Drive models C500-681, C500-865, C750-681, and C750-865.



Model: See Affected Units	Apr. 25, 2025
Serial #: N/A	

Alert

Recommendation

Visual inspection of the top drive guard and structural components must be integral to routine process for drops prevention and should be performed after impacts to the top drive guard and other structural members by equipment or tubulars.

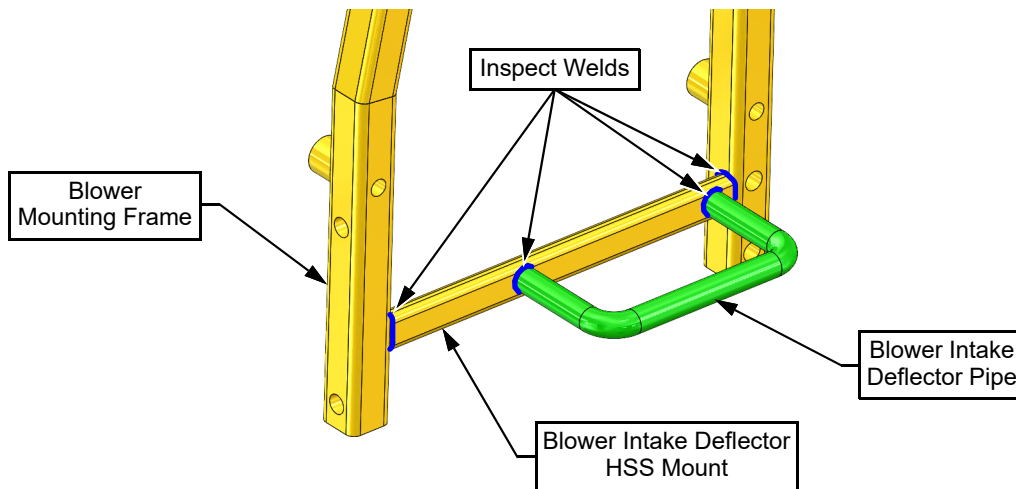


Figure 2: Blower Mounting Frame and Deflector

- Visually inspect the blower deflector and the guard structure for any damage or deformation.
- Visually check for cracks in the welds.
- Repair or replace any damaged components.

When lifting or using the winch or rig hoist around the top drive,

- Plan lifting in advance. Identify the potential snag points during the Job Safety Analysis (JSA).
- When possible, reposition the top drive or equipment to be lifted to reduce the risk of snagging.
- Designate a spotter to look out for snag or potential contact with the top drive.