



Model: See Affected Models Serial #: N/A	Aug. 28, 2025
Product Bulletin # TDS-254 Rev 2	

Mounting Plate Lug Improvement

When clamping onto the handler rotate gear teeth, the top drive mounting plate cylinder lug incurs forces from both the handler gear torquing against the back-up wrench and from the engagement of the handler lock dog jaw teeth. Canrig has improved the design of the top drive mounting plate lug to provide additional strength during operation.

New Mounting Plate Lug

The new mounting plate includes a welded boss that extends through the mounting plate and lug thereby reducing the stresses and fatigue on the welds around the perimeter of the cylinder mounting lug during operation. See Table 1 on page 2 for part numbers.

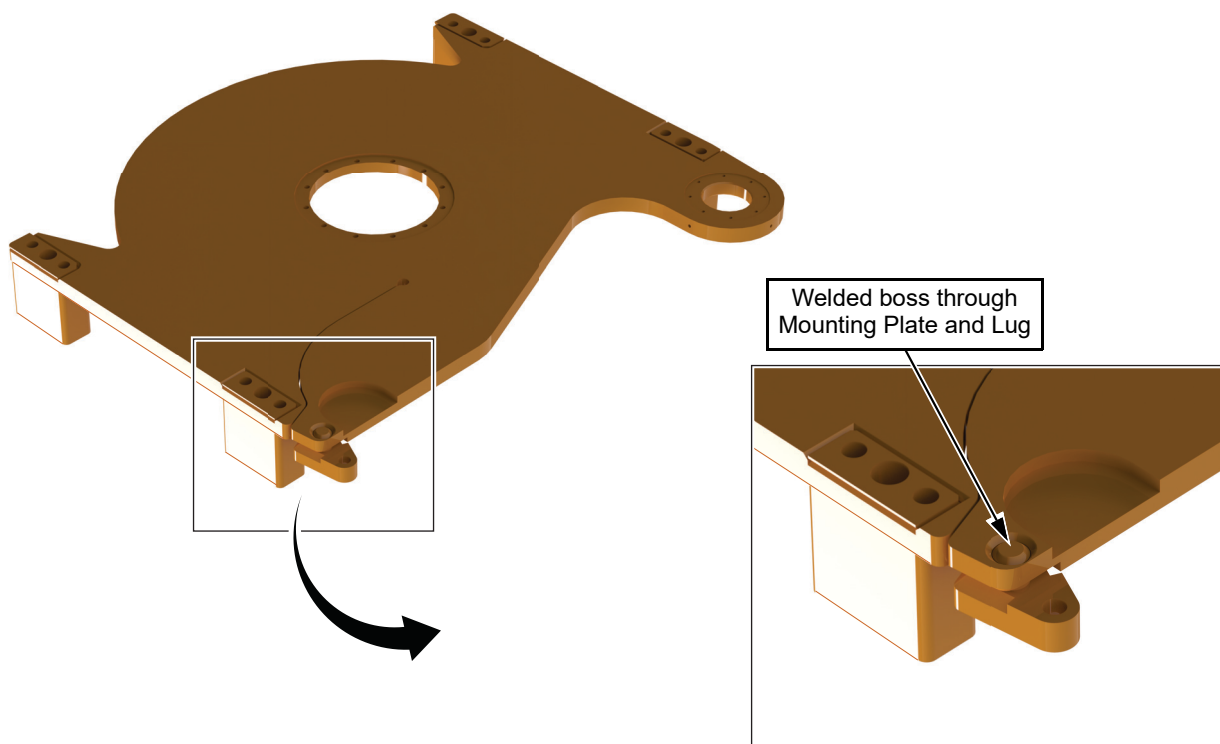


Figure 1: New mounting plate lug



Model: See Affected Models Serial #: N/A	Aug. 28, 2025
---	---------------

Affected Models

All C500 and C750 Top Drives using legacy AY15895, AY17084 or AY17584 Rotary Manifold Assemblies.

Table 1: Mounting Plate Parts

Previous Mounting Plate	New Mounting Plate	Description
DT19275	DT27151	MOUNTNG PLATE, FINAL MACH, ROTARY MANIFOLD
DT17549	DT27468	MOUNTING PLATE, FINAL MACH, ROTARY MAN

Contact Canrig Part Sales (part.sales@canrig.com) to order the new part.