

Technical Bulletin

No: TB039

Rev: 0

Date: Oct. 19, 2006

Description: Mandrel Adapter / Spear Head 12.6 to 15.1 lb/ft
Outside Diameter Reduction – Drift Diameter Interference



Tesco Corporation
6204 – 6A Street SE
Calgary, AB. T2H 2B7
Phone: (403) 692 5700
www.tescocorp.com

BACKGROUND INFORMATION

To ensure that the 12.6 to 15.1 lb/ft mandrel adapters and spear heads will clear the drift diameter for 15.1 lb/ft casing, the outside diameter has been slightly reduced. The previous diameter may not allow for sufficient clearance to easily install or remove the mandrel adapter or spear head from the casing. This change has reduced the largest diameter by 0.020" nominal.

AFFECTED PRODUCT:

The following product may be affected,

Parts

Description	Part No.	Dwg. No.	Mfg. Date
Mandrel Adapter, 4 ½ x 12.6 to 15.1 lb/ft, Machining	16161	80003523 Rev 2	Pre-Sept, 2006
Casing Spear Head, 4 ½ x 12.6 to 15.1 lb/ft Casing	16162	80003296 Rev 1	Pre-Sept, 2006

ACTION REQUIRED:

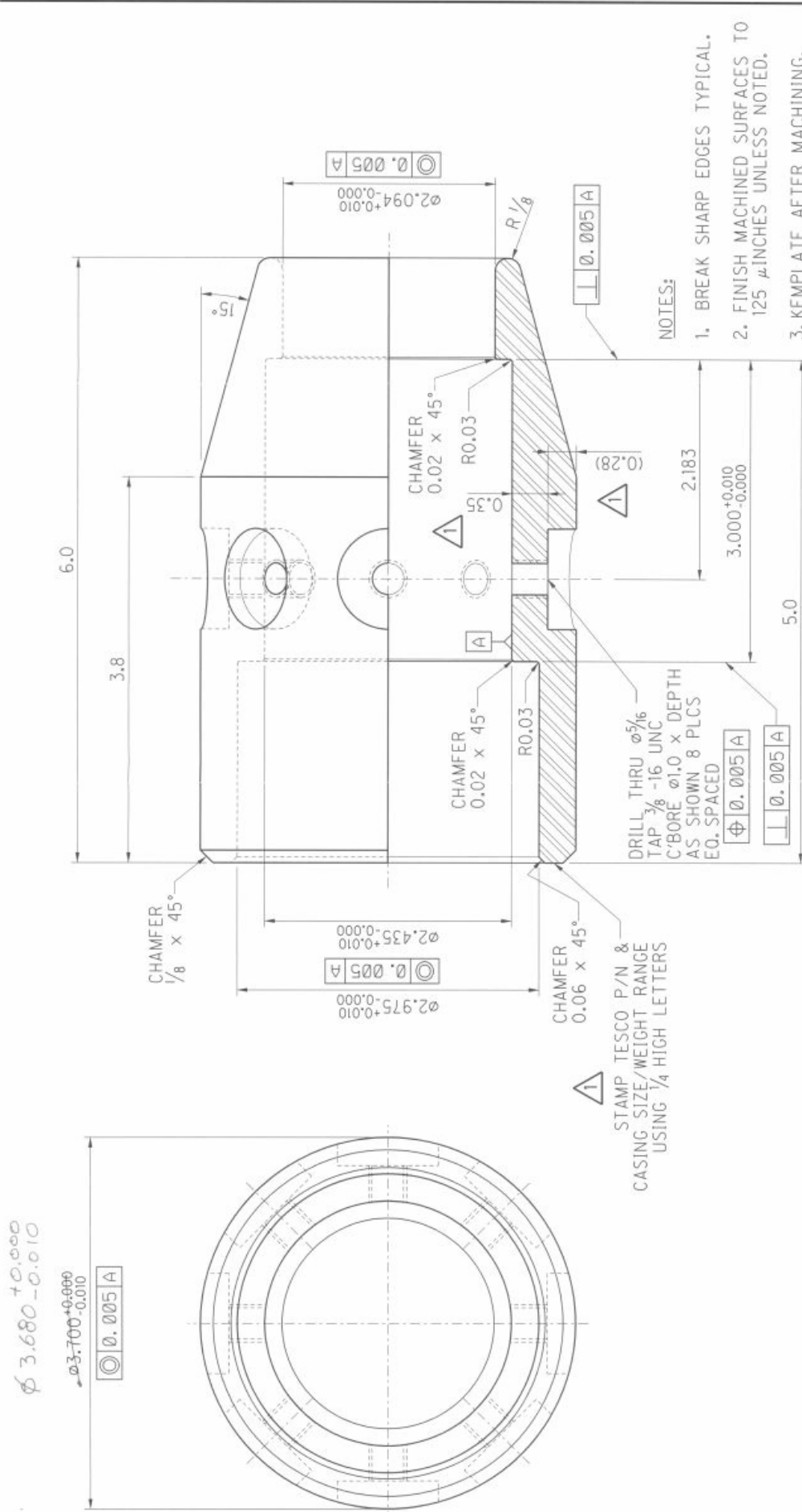
Machine outside diameter of listed parts as per attached redline drawings.

Description	Part No.	Revised Dwg. No.
Mandrel Adapter, 4 ½ x 12.6 to 15.1 lb/ft, Machining	16161	80003523 Rev 3
Casing Spear Head, 4 ½ x 12.6 to 15.1 lb/ft Casing	16162	80003296 Rev 2

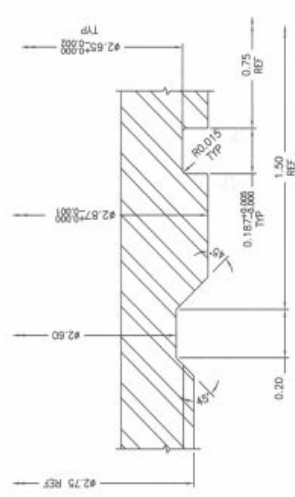
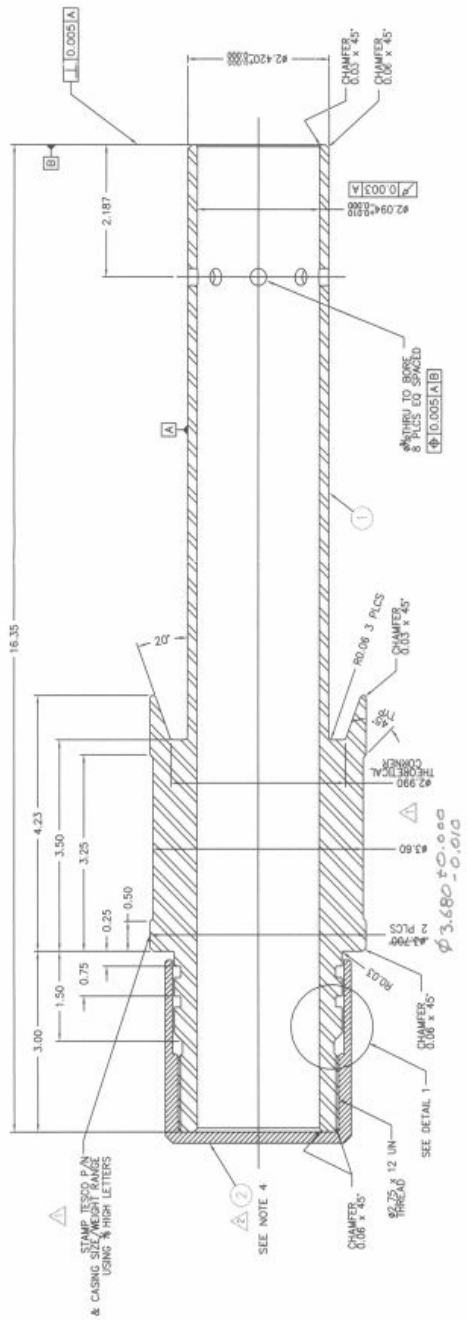
Please contact Tesco Corporation at the following email address on issues specific to this bulletin.

Safety_Technical_Bulletins@TescoCorp.com

Contact your local Tesco Part Sales Center for supply of affected components as noted



<p>STANDARD TOLERANCES:</p> <p>XX.XX \pm 1/16</p> <p>XX.X \pm 0.03</p> <p>XX.XX \pm 0.01</p> <p>XX.XXX \pm 0.005</p> <p>ANGLE \pm 0.5°</p>		<p>TESCO CORPORATION</p>	
<p>PARTS SHALL BE PERMANENTLY IDENTIFIED AS FOLLOWS:</p> <p>-MACHINED PARTS - STAMP, ETCH OR ENGRAVE DRAWING, REV. & P.O. NOS.</p> <p>-WELDS - APPLY DRAWING & REV. NO. USING LOW STRESS STAMPS</p> <p>-FABRICATED P. & SHAPES - APPLY DWG & REV. NO. USING PAINT MARKER</p>		<p>DRAWN: DWM</p> <p>D. CHK.</p> <p>APPR.</p>	
<p>TITLE: CASING SPEAR HEAD, 4 1/2", 12.6-15.1 LB/FT CASING</p> <p>TESCO PART NO. 11647</p>		<p>SHEET 1 OF 1</p> <p>SCALE 1:1</p> <p>FILE 80003296.hmc</p> <p>REV. 1</p>	



- NOTES:
1. BREAK SHARP EDGES TYPICAL
 2. FINISH MACHINED SURFACES TO 125 MICRONS UNLESS NOTED.
 3. AFTER MACHINING, ZINC IMPREGNATION SHALL BE APPLIED TO ALL SURFACES TO PROTECT AGAINST CORROSION.
 4. CONTACT TESSO FOR DETAILS

REV	DATE	DESCRIPTION	BY	CHKD	APP'D	REVISIONS
1						
2						
3						
4						
5						
6						
7						
8						
9						
10						
11						
12						
13						
14						
15						
16						
17						
18						
19						
20						
21						
22						
23						
24						
25						
26						
27						
28						
29						
30						
31						
32						
33						
34						
35						
36						
37						
38						
39						
40						
41						
42						
43						
44						
45						
46						
47						
48						
49						
50						
51						
52						
53						
54						
55						
56						
57						
58						
59						
60						
61						
62						
63						
64						
65						
66						
67						
68						
69						
70						
71						
72						
73						
74						
75						
76						
77						
78						
79						
80						
81						
82						
83						
84						
85						
86						
87						
88						
89						
90						
91						
92						
93						
94						
95						
96						
97						
98						
99						
100						