



SAFETY ALERT

DATE: October 14, 2002

- SUBJECT:** Mounting plate – Handler Rotate Lock
- SERIAL NUMBERS:** 25-27, 34-35, 39, 42, 48,50,55-56, 66, 83, 106, 121, 126-127, 130-131, 133, 135-137, 141, 147
- DISCUSSION:** A Top Drive recently developed a significant crack on the mounting plate, where the handler lock dog is attached. This crack could result in the malfunction of the handler lock and is considered a critical situation, if left unattended.
- RECOMMENDATION:** *Inspect mounting plate for cracks at the lock dog hinge pin, using MPI (see attached drawing for detailed location and previously issued product bulletin 36 for additional information).* If any cracks are detected, the **integrity of the handler lock mechanism is compromised** and the mounting plate must be repaired or replaced as soon as possible. Contact CANRIG for repair procedures. Further, CANRIG has improved replacement plates available upon request.
- If the plate shows no signs of cracks, repeat this inspection periodically (at least every 12 month), to ensure reliable operation of the handler lock.

INFORMATION:

For further information contact:

Field Operations Manager
Canrig Drilling Technology Ltd.
14703 FM 1488
Magnolia, Texas 77354
Phone: 281.259.8887
Fax: 281.259.8158

Picture of cracked mounting plate

Crack
developed
here





CANRIG DRILLING TECHNOLOGY LTD

PRODUCT BULLETIN NUMBER: 36

DATE: July 17, 1996

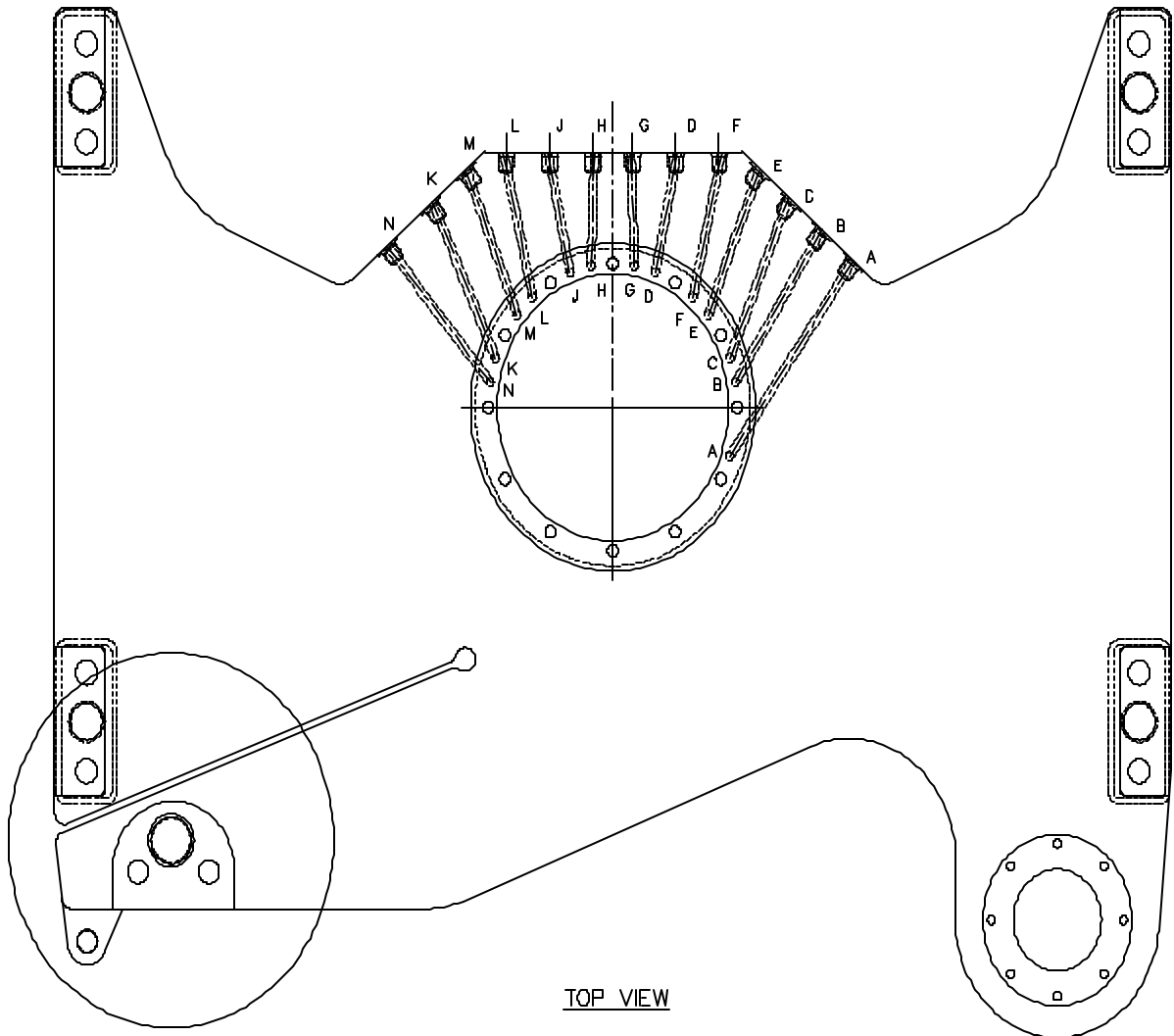
- SUBJECT:** Proper use of the Link Tilt and Handler Lock.
- SERIAL NUMBERS:** 002 - 053
- DISCUSSION:** Proper use of the Handler Lock System and the Link Tilt System can greatly reduce the chances of an accident or personal injury.
- BACKGROUND:** When torquing against the Back-up Wrench, the Handler Lock prevents rotation of the handler assembly due to the applied torque. It is important to avoid the hazard of inadvertent handler rotation with the elevator links tilted.
- RECOMMENDATION:**
1. Please familiarize the rig crews with the attached safety bulletin.
 2. When torquing against the back-up wrench, always keep personnel clear of the swing radius of the links and elevators in case of inadvertent handler rotation.
 3. The driller should keep the links and elevators as close to center as possible when torquing against the back-up wrench. This will minimize the swing radius of the elevators.
 4. The lock pin or locking dog mechanism should be magnetic particle inspected annually.
 5. Top Drive Consoles not already equipped can be fitted with a spring return control for the handler lock if desired. This will default the handler lock to the locked position when not in use. Please contact Canrig for price and availability of a retrofit kit.

INFORMATION:

For further information contact:

Field Operations Manager
Canrig Drilling Technology Ltd.
14703 FM 1488
Magnolia, Texas 77354
Phone: 281.259.8887
Fax: 281.259.8158

Mounting Plate drawing that shows where crack has been found



Area where cracks may develop