

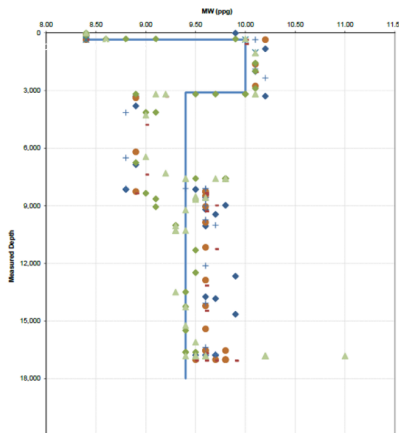
# Nabors MPD-Ready Express Rig with Advanced Drilling Automation Delivers a Record "Big-hole" (8.5 inches OD) Three-mile Production Lateral Section in the Delaware Basin

## CHALLENGE/ OVERVIEW ✓

- Potential loss zones in Brushy Canyon as shown in Fig. #1
- Need higher MWs towards end of lateral as seen on offset wells. Fig. #1
- Mitigate ballooning and wellbore stability issues.

## SOLUTION ✓

- Minimize MW through loss zones via drilling. Fig.#2
- Implement Managed Pressure Drilling for constant bottom hole pressure
- Utilize MPD system for EMW control and influx mitigation
- Address ballooning and ensure wellbore stability



MAINTAINING MAX. EMW 10.17 PPG @ BRUSHY CANYON STATICALLY ON CONNECTIONS

MPD-Ready® SBP schedule

MdI (ft)	TVDI (ft)	Mud Weight (ppg)	SWP (psi)	Dynamic SWP (psi)	Dynamic EMW (ppg)	Dynamic EMW (lb/ft)	Static SWP (psi)	Static EMW (ppg)	Static EMW (lb/ft)
3336	3336	8.50	1831	0	10.31	10.17	112	10.15	10.17
3415	3415	8.50	1978	0	10.28	10.14	124	10.15	10.23
4080	4076	8.50	2216	0	10.26	10.14	143	10.16	10.33
5010	4973	8.50	2677	0	10.20	10.13	180	10.16	10.51
5940	5887	8.50	3121	0	10.13	10.13	220	10.16	10.77
6880	6862	8.50	3625	0	10.11	10.12	256	10.16	10.85
7880	7817	8.50	4075	0	10.07	10.11	277	9.82	10.87
8780	8614	8.50	4555	0	10.05	10.11	277	9.82	10.87
9640	9375	8.50	4882	0	10.01	10.11	277	9.82	10.87
10580	10139	8.50	4893	0	10.07	10.11	277	9.82	10.87
11520	10719	8.50	4917	0	10.12	10.12	298	9.82	10.82
12460	10779	8.50	4942	0	10.18	10.12	299	9.82	10.82
13380	10738	8.50	4967	0	10.23	10.12	290	9.82	10.82
14310	10218	8.50	4993	0	10.28	10.11	231	9.82	10.82
15240	10218	8.50	5018	0	10.33	10.10	233	9.82	10.82
16170	10218	8.50	5044	0	10.38	10.09	236	9.82	10.82
17100	10218	8.50	5070	0	10.42	10.08	238	9.82	10.83
17122	10218	8.50	5070	0	10.45	10.12	238	9.82	10.83

## RECENT SUCCESS ✓

DELAWARE BASIN

### BEST IN BASIN



**17.7 Days**

**Fastest three-mile 8.5 in. production hole**

Beat the previous record by 10 days



**15.25 Hours**

**Fastest Curve**

Beat the previous record by 4 hours

The result is reliable and consistent execution of drilling operations and well construction in challenging formations.

## CONCLUSION ✓

- 1 Set Delaware's best-in-basin 8.5-inch three-mile lateral record in 3rd Bone Spring Sand, surpassing the Operator's previous mark by 10 days
- 2 Beat Operator's curve drilling record by 4 hours, completing in just 15.25 hours with only 2-BHA
- 3 Achieved controlled Constant Bottom Hole Pressure (CBHP), enabling the installation of 27,400 ft. of 5.5" Casing in 19.75 hours.

Following these results, 8.5-inch three-mile production sections with three-string casing designs are regularly performed in the Delaware Basin.