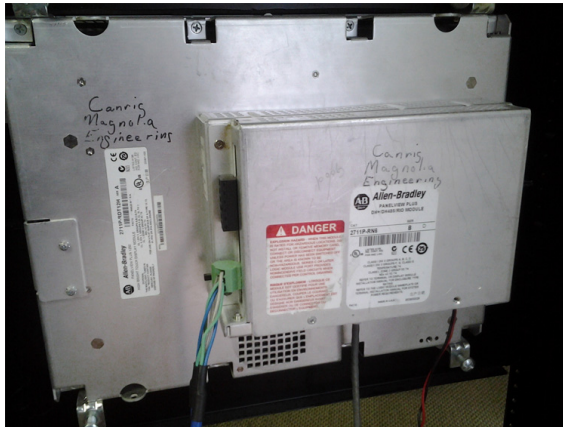


b. Gray (labeled PanelView Plus 1250). See Figure 2 below.



Figure 2: PanelView Plus 1250



PanelView Plus 1250
Two modules in the back



PanelView Plus 6 1250
Only one module in the back

Figure 3: Back view of HMI Displays

If the existing unit is a PanelView Plus 1250 (display on the left on Figure 3) continue to “Identifying Installed Processor” on page 4.

If the existing unit is a PanelView Plus 6 1250, part number AY18938 (display on the right on Figure 3) the procedure is complete. No additional parts are required.

Identifying Installed Processor

The processor SLC 5/03 will not work with the new PanelView Plus 6 1250, therefore a new processor must be ordered. Follow the steps below to identify if a new processor is required:

4. What processor is installed?
 - a. SLC 5/03



Figure 4: SLC 5/03 Processor

When replacing a SLC 5/03 processor unit order the following parts:

Table 3: SLC 5/05 Processor

Qty	Part Number	Description
1	N10150	SLC 5/05 Processor

Continue to "Selecting Required Cable Kit" on page 5.

- b. SLC 5/05

No extra parts required. Continue to "Selecting Required Cable Kit" on page 5.

Selecting Required Cable Kit

The location of the building that contains the processor determines the length of the required cable kit:

5. Where is the building (with the processor) installed?

a. On the ground

Order the following kit:

Table 4: 265' Cable Kit

Qty	Part Number	Description
1	AY20104-265	Kit, Cable, PV1250 Plus 6 upgrade. w/265' Cable

The procedure is complete.

b. On the rig's deck

Table 5: 160' Cable Kit

Qty	Part Number	Description
1	AY20104-160	Kit, Cable, PV1250 Plus 6 upgrade. w/160' Cable

The procedure is complete.

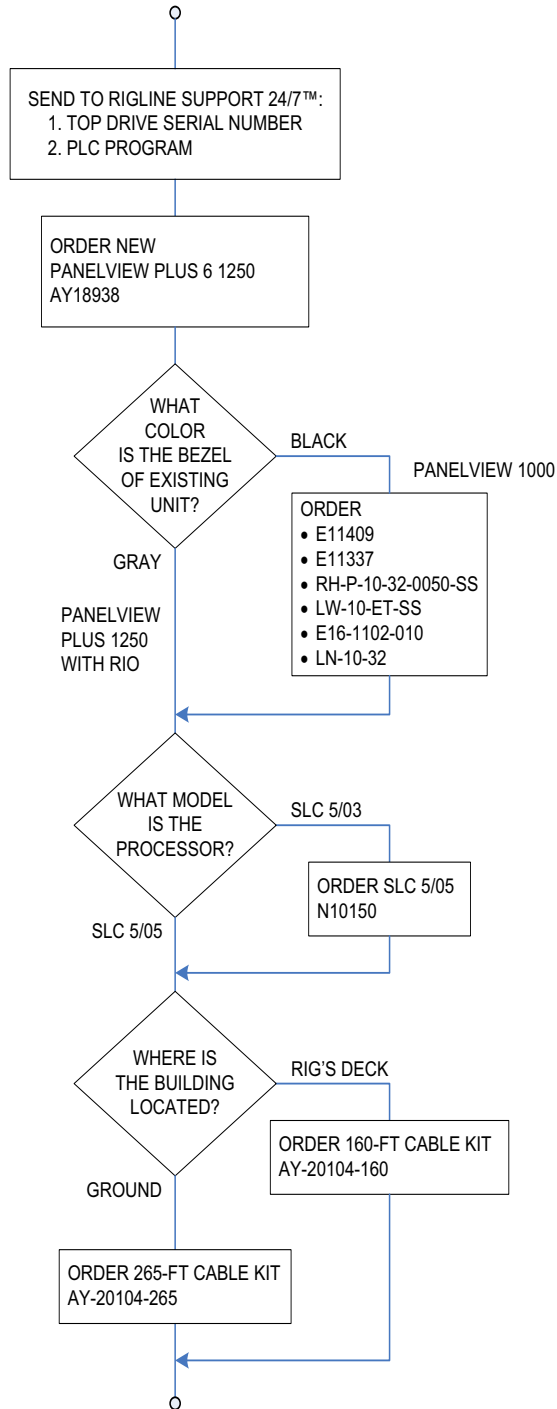


Figure 5: Procedure Flowchart