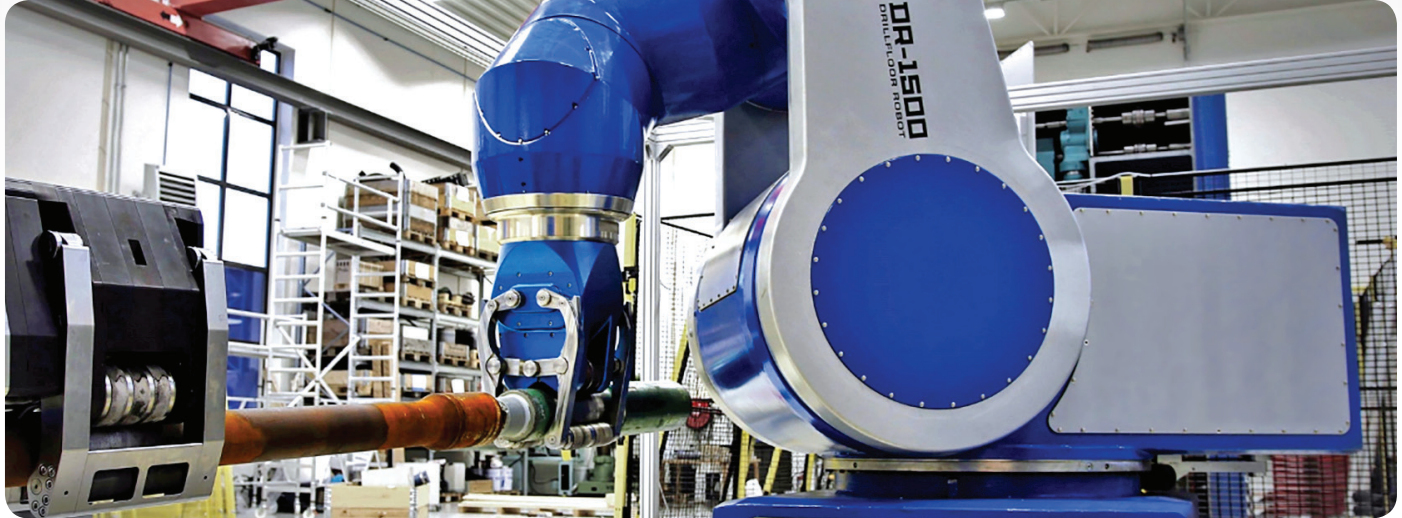
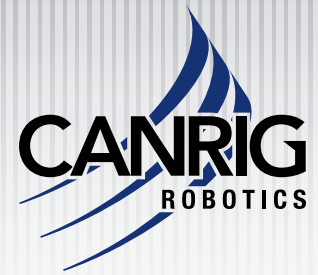


Electric Drill Floor Robot

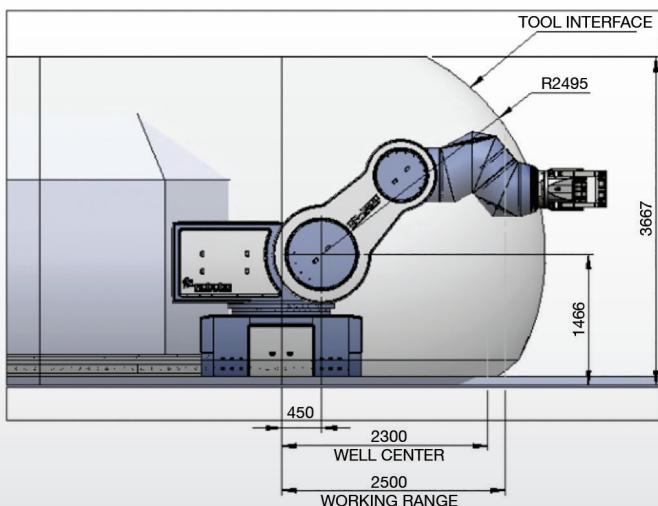


The fully electric drill floor robot automates all pipe and tool operations to reduce the need for manual labor on a rig's drill floor.

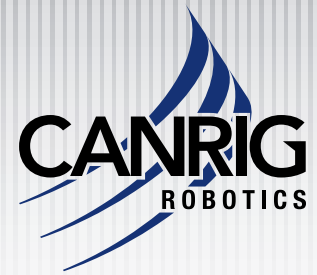
Automated grippers, spinners, clamping and other handling tools enable the electric drill floor robot to perform safer, hands-free drill floor operations. As the robot performs various tasks, it seamlessly uses different “smart” tools to quickly and precisely transfer power and communicate with other rig components. Its self-contained, built-in hardware controls and standard electric components allow for easy installation and low maintenance.


FEATURES & BENEFITS

- Fully electric, seven axis robot with 1500 kg capacity
- Low maintenance required due to use of standard electric components and oilfilled gears
- Handling casing, tubing, liners and screens
- Rapid tool exchange
- High speed and accuracy
- Spinning capability



Electric Drill Floor Robot



TECHNICAL DATA	VALUE			
	DFR	ROBOTIC TOOL SPINNER GRIPPER (RTSG)	CABLES	TOTAL
Weight	13000 kg	300 kg	100 kg	13400 kg
	HEIGHT		WIDTH	
	3170 mm		1620 mm	
	Spinner Gripper: 877 mm length and Ø492 mm diameter			
Maximum TCP Speed	MANUAL		MANUAL HIGH SPEED	
	250 mm/s		600 mm/s	
Operational Temperature	-20oC to 40oC			
Ingress Protection	IP65 – low pressure water from any angle.			
Lifting Capacity	1500 kg			
Payload with RTSG	1200 kg at 2500 mm			
Max Speed/Torque on RTSG Rollers	100 rpm / 540 Nm			
Accuracy	+/- 2 mm at 25% load		+/- 5 mm at maximum load	
Gripping Accuracy	+/- 2,5 mm for measurement of the diameter of the gripped object.			
Repeatability	+/- 1 mm at any load			
Maximum Counter Balancing Cylinder Pressure (Nitrogen)	AXIS A2		AXIS A3	
	360 bar		262 bar	
Rig Motion Acceleration	a_x		a_y	
	2,37 m/s ²		1,74 m/s ²	
Maximum Inclination	3 degrees			
Area Classification	Zone 1			
Code	CE 2460			
	Ex II 2G Ex db ib pxb IIB T3 Gb			
Power Requirements	440 VAC / 3 phase, 108 A peak, 17 A average consumption			
Maintenance Overpressure Inside Robot	2,5 mbar			
Instrument Air Requirements	15 liters per second with 4 bar pressure at intake at power-up (max 22 min). Pressured air class 533 according to ISO 8573-1 Particle 40 µm (class 5) / dew-point -20oC (class 3) / oil 1 mg/m3 (class 3)			
Cooling Fluid Requirements, External Cooling System	Maximum pressure: 6 Bar at 20 liter / min Maximum temperature: 32oC			

SALES INFORMATION

info@Canrig.com

RIGLINE 24/7™ SUPPORT

US & Canada: 866 433 4345
International: +1 281 774 5649
support@rigline247.com